

ROTARY LOBE VACUUM BOOSTER

PANDA - WV SERIES BOOSTERS



DESCRIPTION

Busch Panda boosters are air-cooled, positive displacement, rotary lobe vacuum blowers intended for use in conjunction with a backing pump. They are designed for vertical flow, preventing material buildup within the booster during periods of shutdown, and are quiet, vibration-free, and non-polluting.

An integral bypass valve permits continuous operation of the booster from atmospheric pressure and protects the motor and pump from overloading. The Busch Panda boosters yield a faster pumpdown time than is possible with conventional rotary lobe booster systems and are more reliable because operation is not dependent on pressure or temperature switches. A splash lubrication system in both ends of the booster assures positive lubrication of the bearings and timing gears. The downward vertical flow is standard, however, upward vertical flow is available as an option, as well as a side discharge (at 90° from inlet) for simplicity of mounting.

Panda boosters are ideally suited for use with Busch vacuum pumps. Custom designed booster packages to suit your process requirements are also available. Busch Panda boosters can be modified for gas purge and can be prepared with halogenated oils for oxygen service upon request.



Model WV 2000

FEATURES

- Vertical flow - self draining (horizontal flow available on Model WV2000)
- Horizontal discharge is available on all models
- Integral bypass valve - allows continuous operation from atmospheric pressure
- Sealing rings prevent oil from entering pumping chamber
- Gauge ports for auxiliary instrumentation
- Double shaft seals with separate oil intermediate seal on the drive shaft to prevent air leakage
- C flange, direct-drive motor
- Modular design with O-ring seals permits easy service
- Optional temperature switch in discharge
- Optional water cooling of oil sumps

TECHNICAL DATA

Model	WV0500	WV1000	WV1500	WV2000
CFM Displacement	350	765	1060	1520
Motor Size (HP/Kw)	3/2.2	5/4	7.5/5.5	10/7.5
Rotational Speed (RPM)(Synchronous)	3600	3600	3600	3600
Maximum Leak Rate (Torr-CFM)	2.8x10 ⁻²	2.8x10 ⁻²	2.8x10 ⁻²	2.8x10 ⁻²
Maximum Differential Pressure (Torr)	40	32	32	32
Oil Capacity (Qt.)	1.25	3.2	3.2	5
Approx. Weight (Lbs.)	315	520	634	1200
Seal Material	Viton	Viton	Viton	Viton
Inlet Flange	3" ANSI	4" ANSI	4" ANSI	6" ANSI
Outlet Flange	3" ANSI	4" ANSI	4" ANSI	4" ANSI

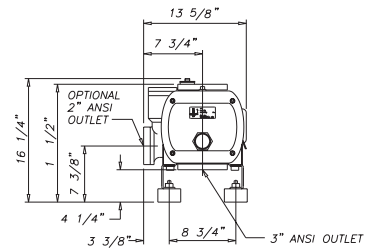
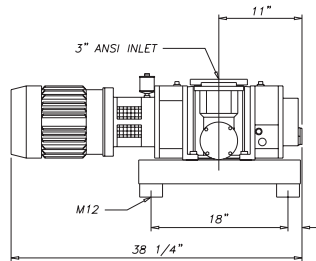
ROTARY LOBE VACUUM BOOSTER

PANDA - WV SERIES BOOSTERS

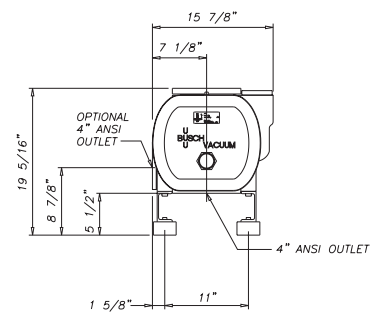
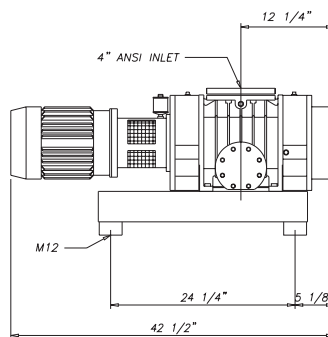


DIMENSIONAL DATA

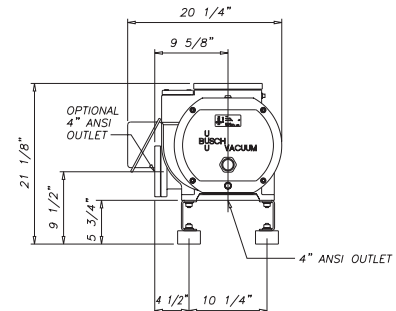
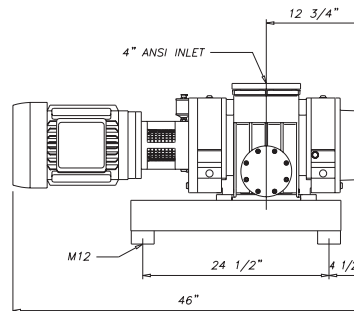
WV0500



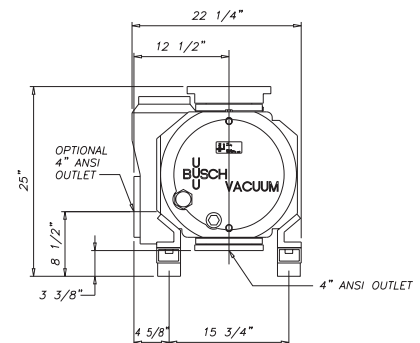
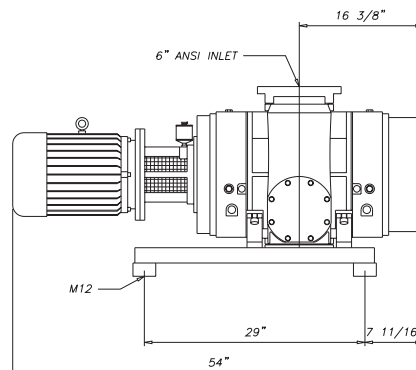
WV1000



WV1500



WV2000



Busch, Inc.
 516 Viking Drive
 Virginia Beach, VA 23452
 Phone (757) 463-7800
 FAX (757) 463-7407
www.buschpump.com

**For more information call
 1-800-USA-PUMP**

ISO 9001 Registered Company

Holland, Spain, Switzerland, Sweden, Turkey, Denmark, England, Australia, Italy, France, China, Germany, Taiwan, Japan, Austria, Canada

Models and specifications are subject to change without notice.

RLVB-13-10/02-2M